

Reconstructia modelului virtual 3D al pacientilor si generarea trajectoriilor pentru acele de brahiterapie

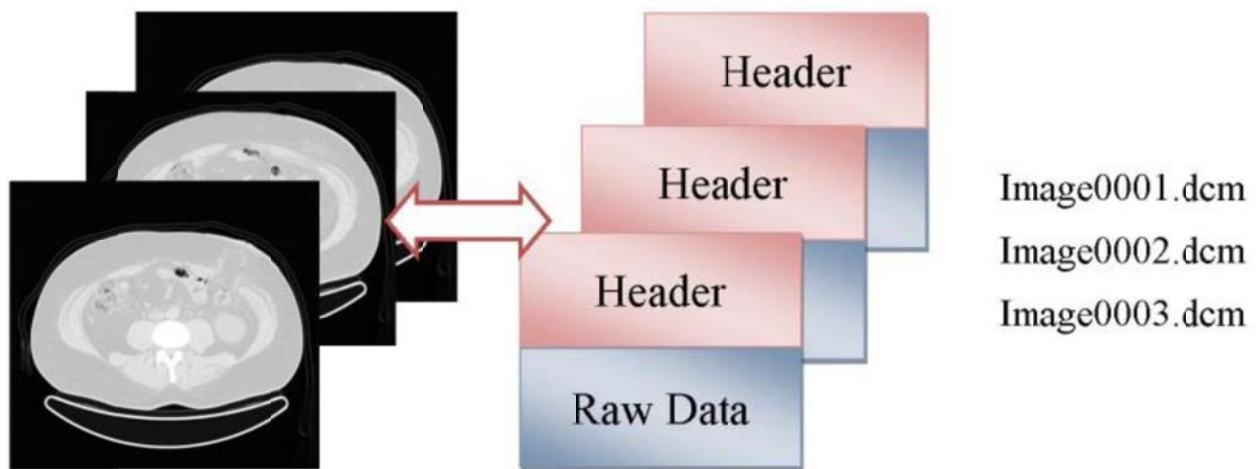


Fig. 1 Salvarea imaginilor DICOM

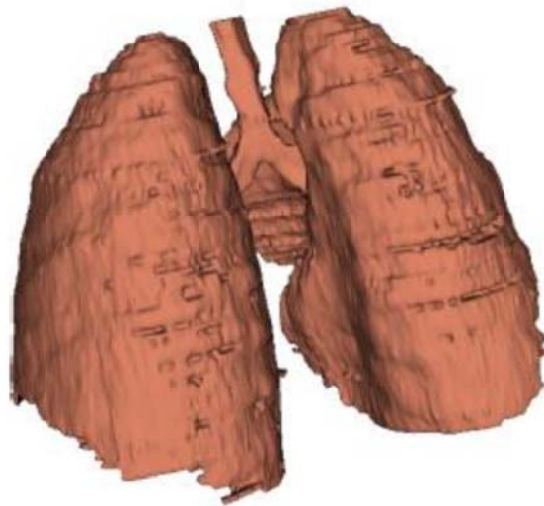
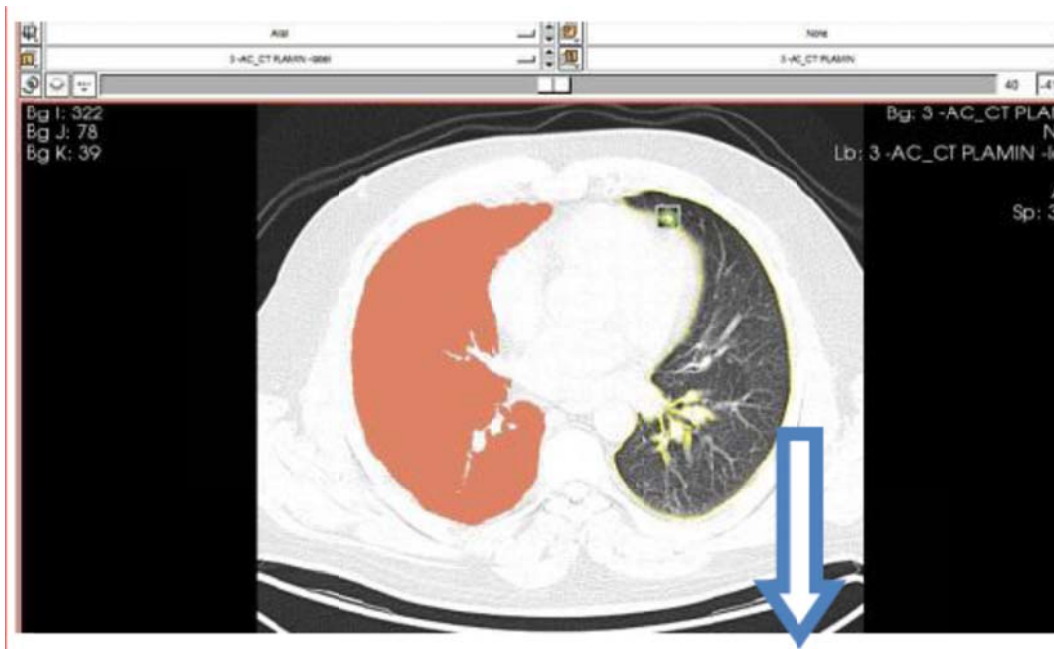


Fig. 2 Reconstructia plamanului folosind softul 3D Slicer

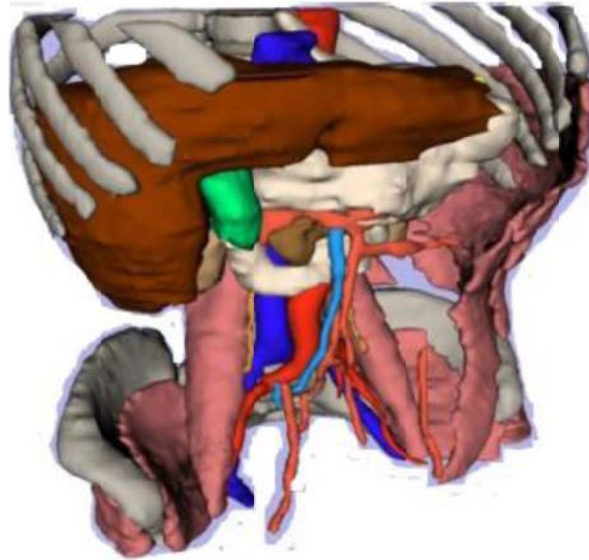


Fig. 3 Modelul 3D al organelor interne, obtinut prin segmentare si reconstructie

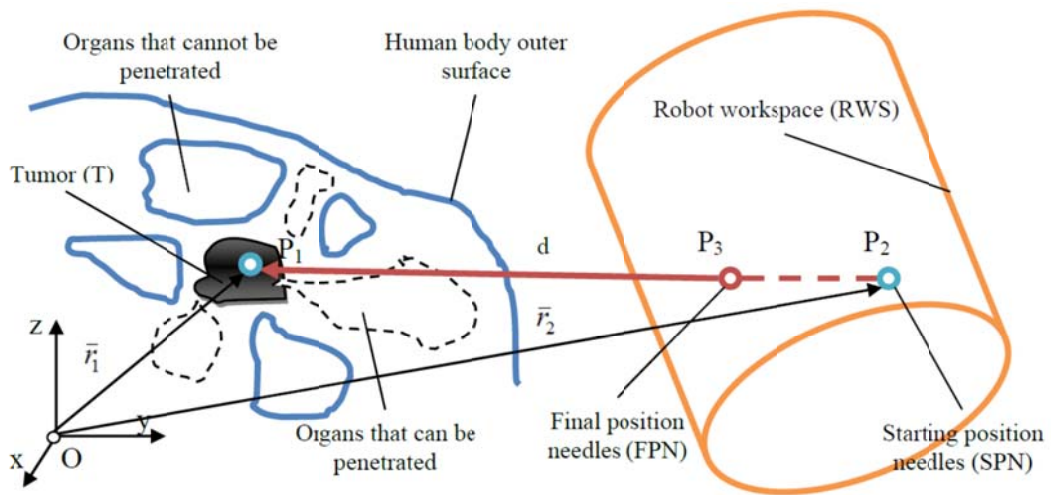


Fig. 4 Generarea traiectoriei acului pentru procedura de brahiterapie asistata robotic

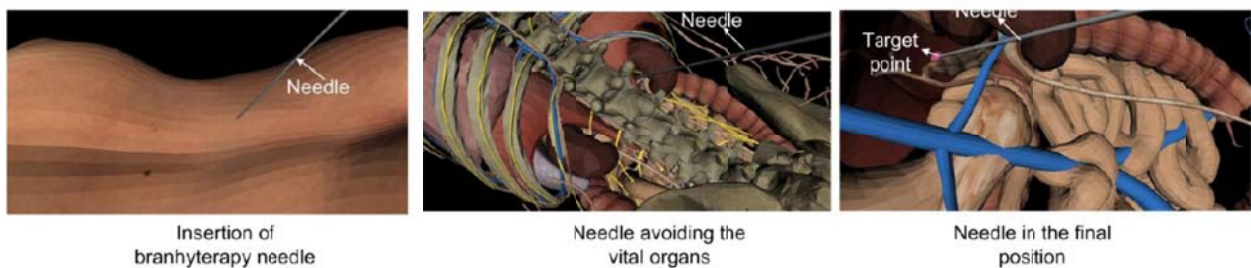


Fig. 5 Pre-planning-ul realizat in mediul virtual inainte de interventie